



Around-the-Islands Chase Race

Saturday, June 10, 2023

Sailing Instructions

MANAGEMENT

The current Racing Rules of Sailing as adopted by the US Sailing Association will govern except as modified herein. All radio communications between the Race Committee and race participants will be on VHF Channel 65. Skippers shall monitor Channel 65 for announcements from the Race Committee and/or the Event Chairman between 12:00 and ten minutes after crossing the finishing line.

INSTRUCTIONS & START TIMES

It is the skipper's responsibility to get their start time and any changes in the instructions from the Committee Boat, not later than 12:40 on the day of the race. Skippers must confirm yacht name and sail number to the Committee by sailing past the stern on starboard tack. Name and number will be acknowledged. Start time for each yacht will be the noted time elapsed from the start gun for each yacht's PHRF. A document listing individual start times will be available on www.OGYC.org under Racing/Race Documents.

TIME LIMIT

The time limit for each yacht shall be 3 hours from its start time.

RATINGS

YRA of LIS PHRF ratings will be used. A rating will be assigned if a valid 2023 YRA of LIS PHRF certificate is not available. Yachts may race with or without spinnaker. Yachts with spinnaker will be scored with their spinnaker PHRF rating. Yachts racing without spinnaker will be scored with their PHRF non-spinnaker rating. Yachts competing in this race as non-spinnaker are prohibited from the use of any headsail whose mid-girth (mid-luff to mid-leech) is more than 50% of its foot measurement. This means: no flashers, jib only. Except when changing headsails, participating yachts may not fly more than one headsail at a time.

START AREA

The start area will be approximately 1/4 mile SW of Newfoundland Reef Buoy.

START SEQUENCE

	SIGNAL	FLAG and SOUND	<u>Minutes before Starting Signal</u>
12:55	Warning	A flag, 1 blast	5
12:56	Preparatory	P flag, 1 blast	4
12:59	One minute	P flag dropped 1 blast	1
13:00	Starting	A flag dropped- one long blast	0



STARTING and FINISHING LINE

The Starting Line and Finishing Line will be established between a Orange flag on the Committee Boat and a pin with an orange flag or an adjacent mark.

SCORING METHOD

All boats will be scored in order of finish.

COURSE

The Around the Islands Race course will be A, G, L - round all marks to starboard. A is the Green Gong G1 at the eastern entrance to Captain's Harbor. G is the red Bell 36, Bluefish Shoal, at the western entrance to Captain's Harbor. L is the red nun, N2, at the entrance to Greenwich Harbor. See the attached chart. The Hen & Chickens Can C-1A shall be passed on the North side. The channel between Cormorant Reef and Great Captain Island shall not be used. Red Rock buoy and Newfoundland Reef buoy shall be passed on the South side.

POSTPONEMENT

Any postponement of the start will be signaled by code flag "AP" and 2 sound signals. The warning signal will be made one minute after this signal is lowered with one sound signal.

ABANDONMENT

Code flag "N" and 3 sound signals. For all racers, whether started or not, the race shall be abandoned.

INDIVIDUAL RECALL

Code Flag "X" and one sound signal. The Race Committee will attempt to broadcast sail numbers of premature starters over VHF Ch 65. Failure of the Race Committee to notify any yacht of a premature start does not relieve that yacht of her obligation to start properly.

WITHDRAWALS

Any yacht withdrawing from the race for any reason shall notify the Race Committee by hailing or by VHF Channel 65.

PROTESTS

Protests shall be made in accordance with Rule 61. Protests must be submitted in writing via email to protest@ogyc.org within 1 hour of the race committee returning to the dock. Protest for a rule of part 2 will initially be arbitrated; the arbitrator will contact the parties. The Protest Arbitration Penalty shall be the 20% Scoring Penalty as described in RRS 44.3(c). The hearing for a protest not resolved by arbitration will take place via Zoom as soon as possible.

YACHT SAFETY AND RESPONSIBILITY

It is the sole responsibility of the master of each yacht to see that she is seaworthy in all respects and that she is manned by a competent crew. The master and all the members of the crew of each yacht, by participating in this race, agree to do so at their own risk, and waive any claim against and hold harmless Old Greenwich YC, its officers, directors, committees, members, employees and agents against any claims arising in any way out of the participation in this race of such yacht, her master and crew. It will be up to the owner/owner's representative to adhere to current federal and state laws governing the usage of boats.

PRIZES and TROPHIES

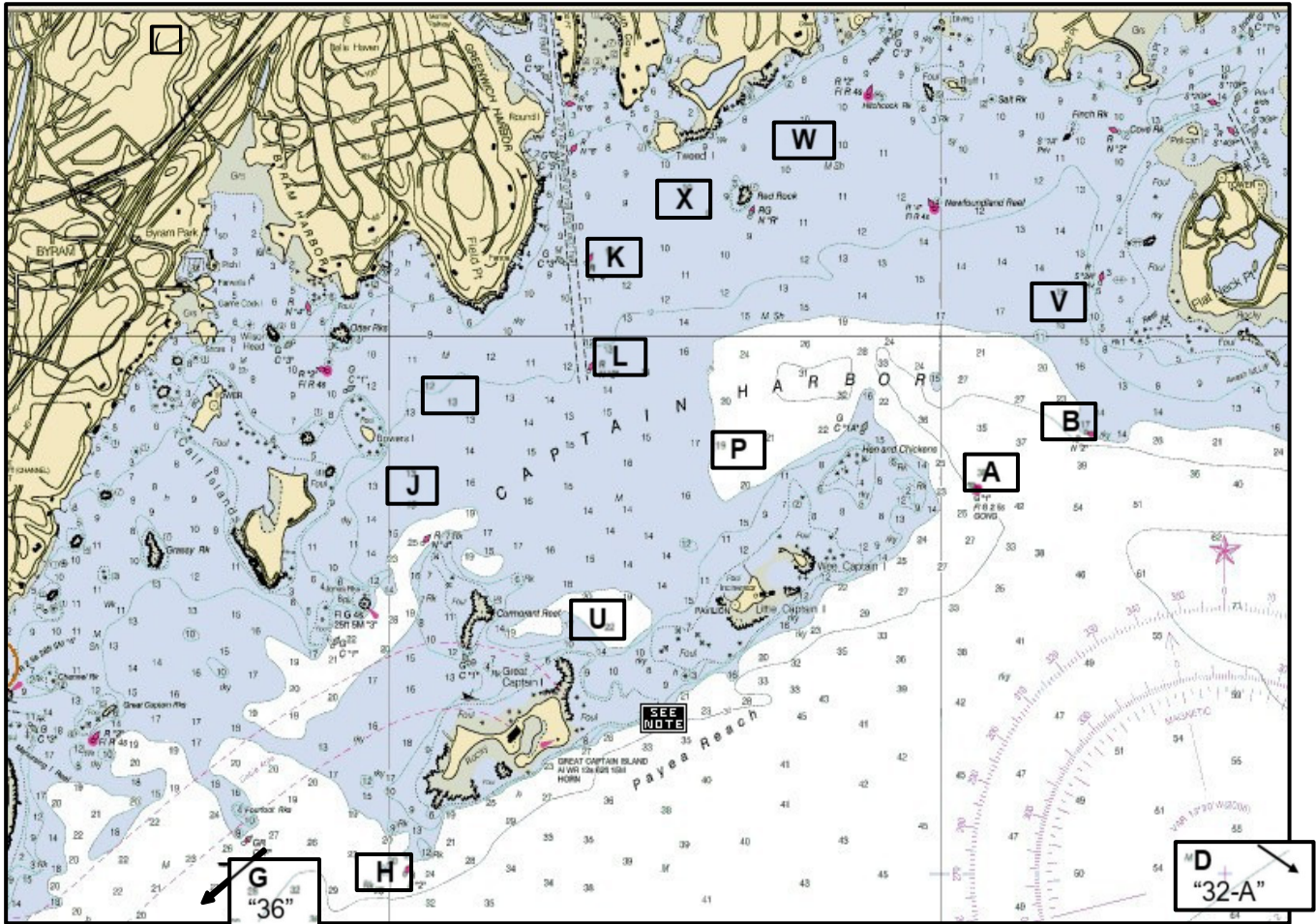
1st place if three, 2nd place if four, 3rd place if five or more competitors. The Around the Islands Chase Race Trophy will be awarded to the overall winner at the Old Greenwich YC Awards ceremony.

FURTHER INFORMATION

Old Greenwich Yacht Club
Tod's Driftway, Old Greenwich CT
race@ogyc.org (*preferred method of communications*)

PROTEST

Contact Karen Varbaro, protest@ogyc.org



YRA Marks

A	Gong 1 northeast of Wee Captain Island	K	N4, Greenwich Harbor	Q	Inflatable m ark approximately 0.25 nm to leeward of the start	V	Fixed RYC m ark west of Sugar Boat
B	N2, Flat Neck Point	L	N2, Greenwich Harbor	R	Fixed BHC m ark south of Belle Haven Club	W	Fixed RYC m ark 0.25 nm ENE of Red Rock
C	Inflatable m ark approximately 1.50 nm to windward of the start	M	Inflatable m ark to the port side of the starting line	S	Inflatable m ark approximately 0.75 nm to windward of the start	X	Fixed I HYC m ark SW WSW of Red Rock
D	Gong 32 - A	N	Inflatable m ark approximately 0.50 nm to leeward of the start	T	The finish m ark located on the opposite side of the start boat from the starting line	Y	Inflatable m ark approximately 0.50 nm to windward of the start
G	Bell 36, Bluefish Shoal	O	Inflatable m ark approximately 100 feet to windward of the starboard end of the starting line	U	Fixed I HYC m ark NNE of Great Captain Island Lighthouse	Z	Inflatable m ark approximately 1.00 nm to windward of the start
H	Nun 2, west of Great Captain Island	P	Fixed m ark north of Wee Captain Island				
J	Fixed I HYC m ark off Calf Island						

Exceptions:

Government m arks shall be passed on the channel side unless used as a mark of the course, with the following exceptions:

Marks B, D, K and L may be passed on either side at the discretion of the skipper when not used as a turning mark Can C- 3, west of Mark K, may be disregarded and left on either hand

The channel between Cormorant Reef and Great Captain I land shall not be used. Red Rock buoy and Newfoundland Reef buoy shall be passed on the south side