



2022 Commodore's Cup August 27, 2022

Sailing Instructions

1 RULES

- 1.1 The event is governed by the rules as defined in The Racing Rules of Sailing.
- 1.2 Appendix T and US Sailing Prescriptions Appendix V apply.
- 1.3 Races may not be shortened prior to the second rounding mark. This changes RRS 32.
- 1.4 Spinnakers may be used during the race.
- 1.5 All boats must be sailed with a minimum of two people.
- 1.6 Both skipper and crew must be OGYC members.

2 CHANGES TO SAILING INSTRUCTIONS

- 2.1 Per RRS 90.2(2), changes to a sailing instruction may be made on the water. To announce an on-water change, the race committee shall signal flag "L" with one sound signal and announce the change on VHF 65A/1065.

3 COMMUNICATIONS WITH COMPETITORS

- 3.1 There will be a skipper's meeting at 15:00 on August 27th. at OGYC to review the SIs and go over the course.
- 3.2 On the water, the race committee intends to monitor and communicate with competitors on VHF radio channel 65A/1065.
- 3.3 The following communications will be made by the race committee on VHF channel 65A/1065
 - Intention to start on time or with a delay
 - One minute courtesy announcement prior to the first warning
 - The course

4 SCHEDULE OF RACES

- 4.1 The first warning signal will be at 15:57 on August 27, 2022.

5 CLASSES & CLASS FLAGS

- 5.1 Division I will be Ideal 18s and they will start first. Division II will be Mercuries and they will start second.

6 RACING AREA

- 6.1 The racing area is inside Captain Harbor. SI Addendum A shows the location of the racing area.
- 6.2 Unless otherwise specified in the Sis. Boats are to sail only within the boundaries of Captain Harbor as specified in the Sail Fleet Agreement.

7 COURSES

- 7.1 Pre-configured courses as described in Addendum A will be signaled by a letter on the signal boat.
- 7.2 There may be different courses for the Ideals and the Mercuries which will be posted by the RC prior to the start.
- 7.3 Courses will not be shortened prior to the second rounding mark. This changes RRS 32.

7.4 Competitors will obey all boundaries as outlined in the OGYC sail fleet use agreement when sailing the course.

8 MARKS

Marks are as described in Addendum B.

9 THE START

9.1 RRS Appendix U shall be used – three-minute sound signal sequence. The start for Division I – Ideal 18s will be the 3 minute warning for Division II - Mercuries.

9.2 The starting line is between a staff displaying a flag on the signal vessel at the starboard end and the course side of the port-end starting mark.

9.3 If any part of a boat's hull is on the course side of the starting line at her starting signal and she is identified, the race committee will attempt to hail her sail number. Failure to hail her number, failure of her to hear such a hail, or the order in which boats are hailed will not be grounds for redress. This changes RRS 62.1(a).

9.4 A boat that does not start within five minutes after her starting signal will be scored Did Not Start (DNS) without a hearing. This changes RRS A5.1 and A5.2.

10 CHANGE OF THE NEXT LEG OF THE COURSE

The course may not be changed after the first warning signal. This changes RRS 33.

11 THE FINISH

The finishing line is between a staff displaying a flag on the signal or mark boat and the course side of the nearby finishing mark.

12 ALTERNATIVE PENALTIES

12.1 Appendix V1, Penalty at the Time of the Incident applies whereby a boat may take a One-Turn Penalty when she may have broken a rule of Part 2 or rule 31 while racing, but when she may have broken a rule of Part 2 while in the zone around a mark other than a starting mark, her penalty shall be a Two-Turns Penalty.

12.2 Appendix V2, Post-Race Penalties, shall apply.

13 TIME LIMITS

13.1 The Race Time Limit (see RRS 35) will be 1 ½ hours after the start.

13.2 The Race Time Limit is the time for boats to finish. Boats failing to finish within the Race Time Limit, and not having retired prior to the Race Time Limit or subsequently penalized or given redress, will be scored Time Limit Expired (TLE) without a hearing. A boat scored TLE shall be scored points for the finishing place two more than the points scored by the last boat in her class that finished within the Race Time Limit. This changes RRS 35, A5.1, A5.2 and A10.

13 PROTESTS & HEARING REQUESTS

13.1 Boats shall announce their intention to protest or any penalty turns taken via VHF 65A/1065 when they finish and repeat such announcements until acknowledged by the race committee.

13.2 Protests shall be delivered to protest committee either in writing or by email to protest@ogyc.org no later than one hour after finishing (the "protest time limit")

14 SCORING & PRIZES

14.1 Scoring will be low point system as described in A4.

14.2 Prizes will be awarded for first if there are 3 boats or less in a division, first and second if there are 4 boats and first, second and third, if there are more than four boats.

15 SAFETY REGULATIONS

15.1 A boat that retires from a race shall notify the race committee at the first reasonable opportunity.

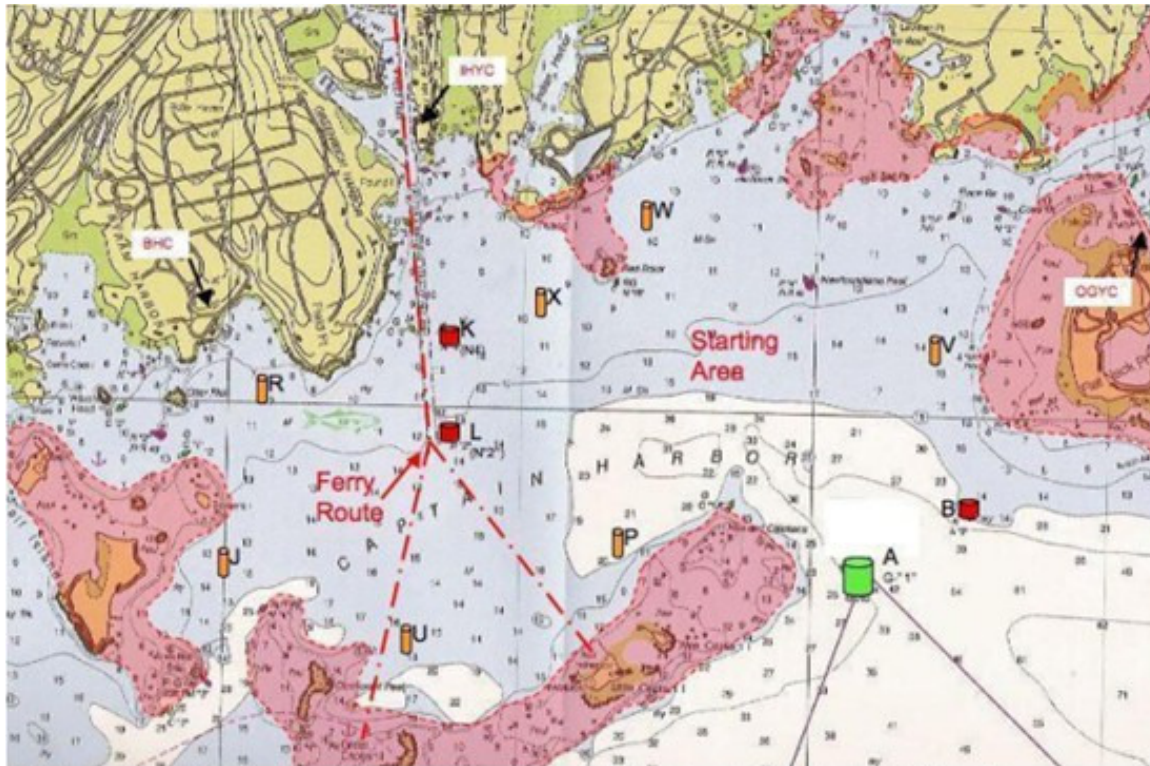
16 YACHT SAFETY AND RESPONSIBILITY:

It is the sole responsibility of the master of each yacht to see that she is seaworthy in all respects and that she is manned by a competent crew. The master and all the members of the crew of each yacht, by participating in this race, agree to do so at their own risk, and waive any claim against and hold harmless Old Greenwich YC, its officers, directors, committees, members, employees and agents against any claims arising in any way out of the participation in this race of such yacht, her master and crew.

COURSES: ADDENDUM A

Course Name	Marks & Rounding Order	Round (leave) all Marks to	Wind is from the	Start area			
				east end	west end		
A	BX	Port	Southeast	2.5	2.5		
AT	BXTX	Port		3.5	3.5		
B	BVX	Port		2.7	2.7		
D	AV	Port	South	1.5	1.5		
E	AVW	Port	180	2.5	2.5		
F	AW	Port		2.0	2.0		
FT	AWTW	Port		2.8	2.8		
G	PL	Starboard	Southwest	2.0	2.0		
GT	PLTP	Starboard	225	4.0	4.0		
H	UL	Starboard		2.6	2.6		
HT	ULTU	Starboard		5.2	5.2		
J	LV	Port	West	2.5	2.5		
K	LP	Port		2.0	2.0		
KT	LPTL	Port		3.5	3.5		
L	LU	Port		2.7	2.7		
LT	LUTL	Port		3.75	3.75		
M	JV	Port		4.0	4.0		
N	XB	Port	Northwest	2.5	2.5		
NT	XBTB	Port		3.5	3.5		
OT	XLBTB	Port		4.6	4.6		
P	YB	Port		1.5	1.5		
R	WA	Starboard	North	2.0	2.0		
S	WVA	Starboard		2.3	2.3		
ST	WATA	Port		3.4	3.4		
U	YP	Port	Northeast	1.5	1.5		
UT	YPTP	Port	45	3.0	3.0		
V	YU	Port		2.5	2.5		
VT	YUTU	Port		4.0	4.0		
W	YLP	Port		2.25	2.25		
X	VL	Starboard	East	2.5	2.5		
XT	VXLTL	Port	90	4.0	4.0		
Z	VPL	Starboard		2.8	2.8		
ZJ	VJ	Port		4.0	4.0		

MARKS: ADDENDUM B



- (1) Red Rock buoy & Newfoundland Reef buoy are deemed to be marks of the course and shall be passed to the south
- (2) Hen & Chickens Can C-1A is deemed to be a mark of the course and shall be passed to the north

MARK	DESCRIPTION	MARK	DESCRIPTION
A	Bell "G-1", Little Captain Island Reef	U	Special IHYC mark NNE of Great Captain Island Light
B	Red Nun "2", Flat Neck Point	V	Special RYC mark west of Sugar Boat
J	Special IHYC mark off Calf Island	W	Special RYC Mark 1/4 mi ENE of Red Rock
L	Red Nun "2", Greenwich Harbor	X	Special IHYC mark SW of Tweed Island
P	Special RYC Mark north of Wee Captain Island	Y	Special mark approximately 1/2 mi. to windward of Start
T	Start/finish mark		