



Commodore's Cup August 28, 2021

Sailing Instructions

1 RULES

- 1.1 The event is governed by the rules as defined in The Racing Rules of Sailing.
- 1.2 Appendix T and US Sailing Prescriptions Appendix V apply.
- 1.3 Races may not be shortened prior to the second rounding mark. This changes RRS 32.
- 1.4 Spinnakers may be used during the race.
- 1.5 All boats must be sailed with a minimum of two people.
- 1.6 Both skipper and crew must be OGYC members.

2 CHANGES TO SAILING INSTRUCTIONS

- 2.1 Per RRS 90.2(2), changes to a sailing instruction may be made on the water. To announce an on-water change, the race committee shall signal flag "L" with one sound signal and announce the change on VHF 65A/1065.

3 COMMUNICATIONS WITH COMPETITORS

- 3.1 There will be a skippers meeting at 3 p.m. at OGYC to review the SIs and go over the course.
- 3.2 On the water, the race committee intends to monitor and communicate with competitors on VHF radio channel 65A/1065.
- 3.3 The following communications will be made by the race committee on VHF channel 65A/1065
 - Intention to start on time or with a delay
 - One minute courtesy announcement prior to the first warning
 - The course

4 SCHEDULE OF RACES

- 4.1 The first warning signal will be at 15:57 on August 28, 2021.

5 CLASSES & CLASS FLAGS

- 5.1 Division I will be Ideal 18s and they will start first. Division II will be Mercuries and they will start second.

6 RACING AREA

The racing area is inside Captain Harbor. SI Addendum A shows the location of the racing area.

7 COURSES

- 7.1 Pre-configured courses as described in Addendum A will be signaled by a letter on the signal boat.
- 7.2 There may be different courses for the Ideals and the Mercuries which will be posted by the RC prior to the start.
- 7.3 Courses will not be shortened prior to the second rounding mark. This changes RRS 32.

8 MARKS

Marks are as described in Addendum B.

9 THE START

- 9.1 RRS Appendix U shall be used – three-minute sound signal sequence. The start for Division I – Ideal 18s will be the 3 minute warning for Division II - Mercuries.
- 9.2 The starting line is between a staff displaying a flag on the signal vessel at the starboard end and the course side of the port-end starting mark.
- 9.3 If any part of a boat's hull is on the course side of the starting line at her starting signal and she is identified, the race committee will attempt to hail her sail number. Failure to hail her number, failure of her to hear such a hail,

- or the order in which boats are hailed will not be grounds for a redress for request. This changes RRS 62.1(a).
- 9.4 A boat that does not start within five minutes after her starting signal will be scored Did Not Start without a hearing. This changes RRS A5.1 and A5.2.

10 CHANGE OF THE NEXT LEG OF THE COURSE

The course may not be changed after the first warning signal. This changes RRS 33.

11 THE FINISH

The finishing line is between a staff displaying a flag on the signal or mark boat and the course side of the nearby finishing mark.

12 ALTERNATIVE PENALTIES

- 12.1 Appendix V1, Penalty at the Time of the Incident applies whereby a boat may take a One-Turn Penalty when she may have broken a rule of Part 2 or rule 31 while racing, but when she may have broken a rule of Part 2 while in the zone around a mark other than a starting mark, her penalty shall be a Two-Turns Penalty.
- 12.2 Appendix V2, Post-Race Penalties, shall apply.

13 TIME LIMITS

- 13.1 The Race Time Limit (see RRS 35) will be 1 ½ hours after the start.
- 13.2 The Race Time Limit is the time for boats to finish. Boats failing to finish within the Race Time Limit, and not having retired prior to the Race Time Limit or subsequently penalized or given redress, will be scored Time Limit Expired (TLE) without a hearing. A boat scored TLE shall be scored points for the finishing place two more than the points scored by the last boat in her class that finished within the Race Time Limit. This changes RRS 35, A5.1, A5.2 and A10.

13 PROTESTS & HEARING REQUESTS

- 13.1 Boats shall announce their intention to protest or any penalty turns taken via VHF 65A/1065 when they finish and repeat such announcements until acknowledged by the race committee.
- 13.2 Protests shall be delivered to protest committee either in writing or by email to protest@ogyc.org no later than one hour after finishing (the "protest time limit")

14 SCORING & PRIZES

- 14.1 Scoring will be low point system as describe in A4.
- 14.2 Prizes will be awarded for first if there are 3 boats or less in a division, first and second if there are 4 boats and first, second and third, if there are more than four boats.

15 SAFETY REGULATIONS

- 15.1 A boat that retires from a race shall notify the race committee at the first reasonable opportunity.

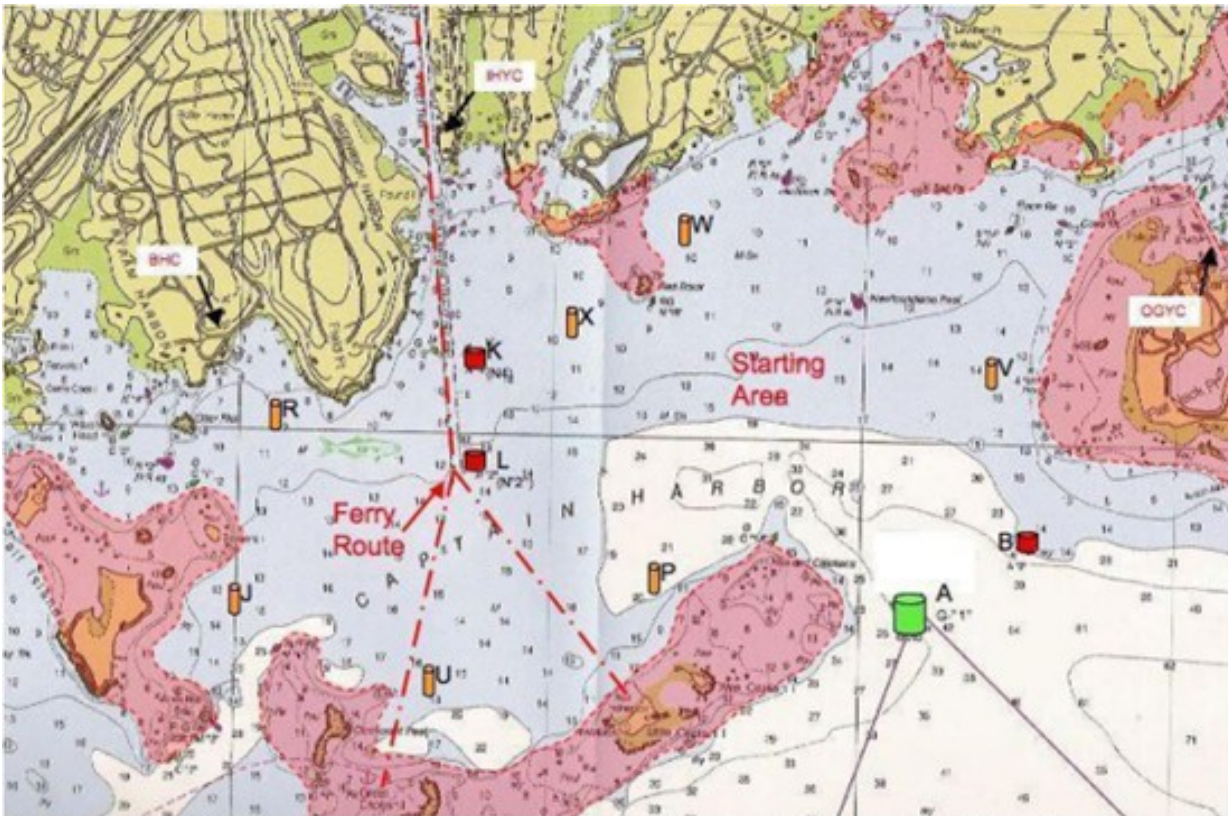
16 RISK STATEMENT

RRS 3 states: 'The responsibility for a boat's decision to participate in a race or to continue to race is hers alone.' By participating in this event each competitor agrees and acknowledges that sailing is a potentially dangerous activity with inherent risks. These risks include strong winds and rough seas, sudden changes in

COURSES: ADDENDUM A

Course Name	Marks & Rounding Order	Round (leave) all Marks to	Wind is from the	Start area			
				east end	west end		
A	BX	Port	Southeast	2.5	2.5		
AT	BXTX	Port		3.5	3.5		
B	BVX	Port		2.7	2.7		
D	AV	Port	South	1.5	1.5		
E	AVW	Port	180	2.5	2.5		
F	AW	Port		2.0	2.0		
FT	AWTW	Port		2.8	2.8		
G	PL	Starboard	Southwest	2.0	2.0		
GT	PLTP	Starboard	225	4.0	4.0		
H	UL	Starboard		2.6	2.6		
HT	ULTU	Starboard		5.2	5.2		
J	LV	Port	West	2.5	2.5		
K	LP	Port		2.0	2.0		
KT	LPTL	Port		3.5	3.5		
L	LU	Port		2.7	2.7		
LT	LUTL	Port		3.75	3.75		
M	JV	Port		4.0	4.0		
N	XB	Port	Northwest	2.5	2.5		
NT	XBTB	Port		3.5	3.5		
OT	XLBTB	Port		4.6	4.6		
P	YB	Port		1.5	1.5		
R	WA	Starboard	North	2.0	2.0		
S	WVA	Starboard		2.3	2.3		
ST	WATA	Port		3.4	3.4		
U	YP	Port	Northeast	1.5	1.5		
UT	YPTP	Port	45	3.0	3.0		
V	YU	Port		2.5	2.5		
VT	YUTU	Port		4.0	4.0		
W	YLP	Port		2.25	2.25		
X	VL	Starboard	East	2.5	2.5		
XT	VXLT	Port	90	4.0	4.0		
Z	VPL	Starboard		2.8	2.8		
ZJ	VJ	Port		4.0	4.0		

MARKS: ADDENDUM B



- (1) Red Rock buoy & Newfoundland Reef buoy are deemed to be marks of the course and shall be passed to the south
- (2) Hen & Chickens Can C-1A is deemed to be a mark of the course and shall be passed to the north

MARK	DESCRIPTION	MARK	DESCRIPTION
A	Bell "G-1", Little Captain Island Reef	U	Special IHYC mark NNE of Great Captain Island Light
B	Red Nun "2", Flat Neck Point	V	Special RYC mark west of Sugar Boat
J	Special IHYC mark off Calf Island	W	Special RYC Mark 1/4 mi ENE of Red Rock
L	Red Nun "2", Greenwich Harbor	X	Special IHYC mark SW of Tweed Island
P	Special RYC Mark north of Wee Captain Island	Y	Special mark approximately 1/2 mi. to windward of Start
T	Start/finish mark		