



Around-the-Islands Chase Race

Saturday, June 12, 2021

Old Greenwich Yacht Club, Old Greenwich CT
Is the Organizing Authority

NOTICE OF RACE

1. RULES

- 1.1** The regatta will be governed by the current "Racing Rules of Sailing"
- 1.2** Boats shall comply with rules and requirements of their respective class and/or measurement rules unless amended herein.
- 1.3** The regatta is open to boats 18 feet and over with a current YRA of LIS PHRF certificate. A rating will be assigned if a valid 2021 YRA of LIS PHRF certificate is not available.

2. ELIGIBILITY, ENTRY & FEES

- 2.1** Entries can be made until 12:00 p.m. Friday, June 11th and all entries shall be made on line through the Old Greenwich Yacht Club website at www.OGYC.org under Racing.
- 2.2** Entry Fee shall be \$25.00

3. SCHEDULE

- 3.1** The scheduled time of the warning signal for first start is 10:55. Remaining starts will follow as assigned in the Chase Race Start Time schedule which will be available on the OGYC website.
- 3.2** Each Yacht is responsible to get their individual start time
- 3.3** Races not completed on June 12th will not be rescheduled

4. SAILING INSTRUCTIONS

- 4.1** The Sailing Instructions will be available beginning no later than June 12th from the Old Greenwich YC club house; or online at www.OGYC.org under Racing/Race Documents.

5. VENUE & COURSES

5.1 The starting line will be within Captain Harbor, Greenwich CT.

5.2 The Round the Island Race course will be A, G, L – round to starboard. A is the Green Gong G1 at the eastern entrance to Captain’s Harbor. G is the red Bell 36, Bluefish Shoal, at the western entrance to Captain’s Harbor. L is the red nun, N2, at the entrance to Greenwich Harbor. See the attached chart. All additional instructions will be available in the Sailing Instructions.

5.3 The finish line will be the same as the starting line

5.4 The time limit will be 3 hours per boat

6. SCORING

All boats will be scored in finish order.

7. PRIZES

1st place if three, 2nd place if four, 3rd place if five starters in a division.

8 DISCLAIMER OF LIABILITY

8.1 The safety of a boat and her entire management shall be the sole inescapable responsibility of the owner / owner’s representative. Sailing is an activity that has an inherent risk of damage and injury. Competitors in this event are participating entirely at their own risk. The race organizers (organizing authority, race committee, protest committee, host club, sponsors, or any other organization or official) will not be responsible for damage to any boat or other property or the injury to any competitor, including death, sustained as a result of participation in these events. By participating in these events, each competitor agrees to release the race organizers from any and all liability associated with such competitor’s participation in this event to the fullest extent permitted by law. It will be up to the owner/owner’s representative to adhere to current federal and state laws governing the usage of boats.

9 FURTHER INFORMATION

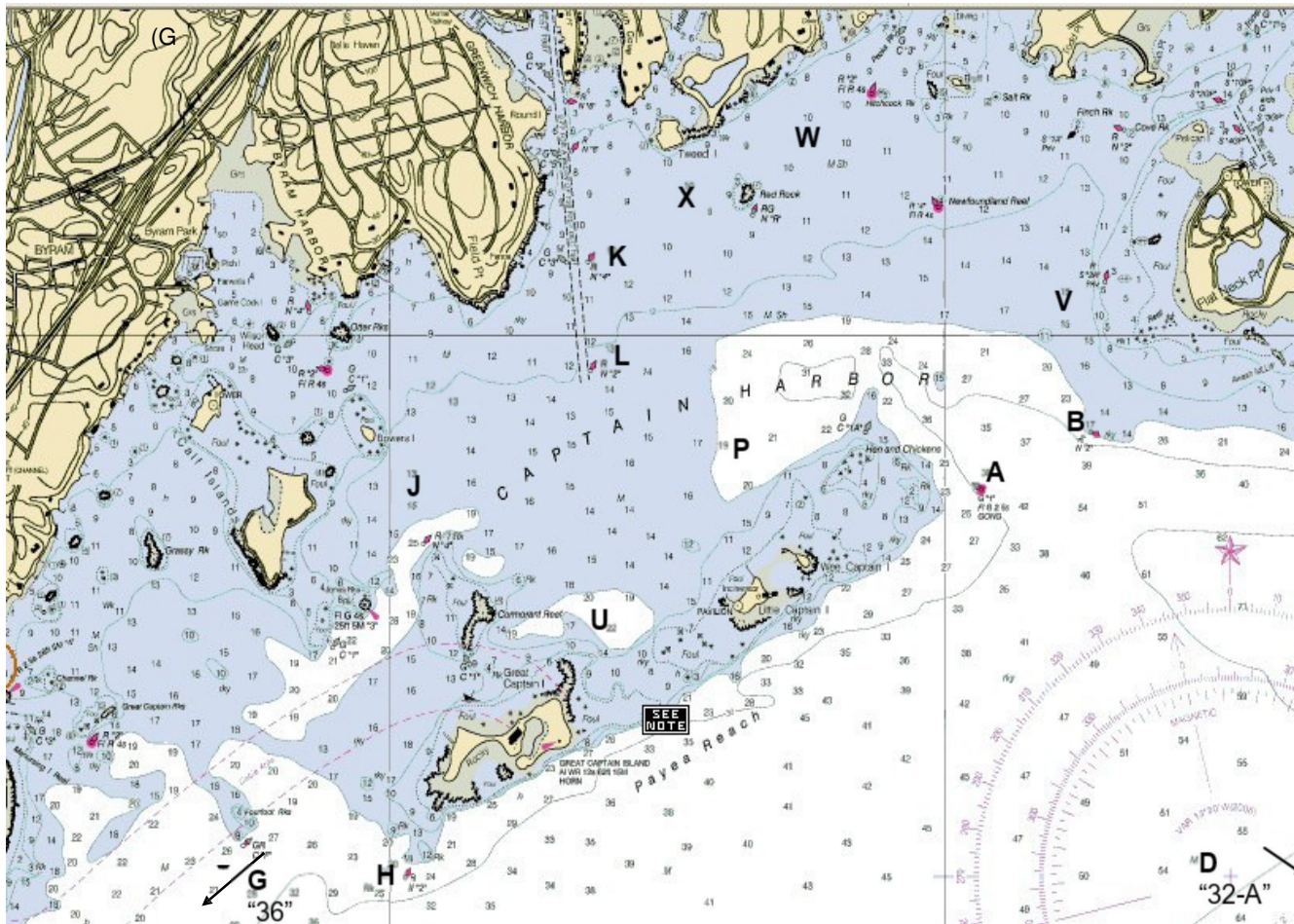
Old Greenwich Yacht Club

Tod’s Driftway,

Old Greenwich CT

203-637-3074

race@ogyc.org



YRA M ark s

A Gong 1 northeast of Wee Captain Island	K N4 , Greenwich Harbor	Q Inflatable m ark approximately 0.25 nm to leeward of the start	V Fixed RYC m ark west of Sugar Boat
B N2 , Flat Neck Point	L N2 , Greenwich Harbor	R Fixed BHC m ark south of Belle Haven Club	W Fixed RYC m ark 0.25 nm ENE of Red Rock
C Inflatable m ark approximately 1.50 nm to windward of the start	M Inflatable m ark to the port side of the starting line	S Inflatable m ark approximately 0.75 nm to windward of the start	X Fixed I HYC m ark SW WSW of Red Rock
D Gong 32 - A	N Inflatable m ark approximately 0.50 nm to leeward of the start	T The finish m ark located on the opposite side of the start boat from the starting line	Y Inflatable m ark approximately 0.50 nm to windward of the start
G Bell 36, Bluefish Shoal	O Inflatable m ark approximately 100 feet to windward of the starboard end of the starting line	U Fixed I HYC m ark NNE of Great Captain Island Lighthouse	Z Inflatable m ark approximately 1.00 nm to windward of the start
H Nun 2, west of Great Captain Island	P Fixed m ark north of Wee Captain Island		
J Fixed I HYC m ark off Calf Island			

EXCEPTIONS

Government marks shall be passed on the channel side unless used as a mark of the course, with the following exceptions:

Marks B, D, K and L may be passed on either side at the discretion of the skipper when not used as a turning mark. Can C-3, west of Mark K, may be disregarded and left on either hand.

The channel between Cormorant Reef and Great Captain Island shall not be used. Red Rock buoy and Newfoundland Reef buoy shall be passed on the south side.

Hen & Chickens buoy 1A and Cormorant Reef Red Nun "4" shall be passed on the north side. The passage between Great Captain & Little Captain Islands shall not be used.